

# Mercer periodic table of annual investment returns

Click on an index in the legend below to view its trend through the decade.

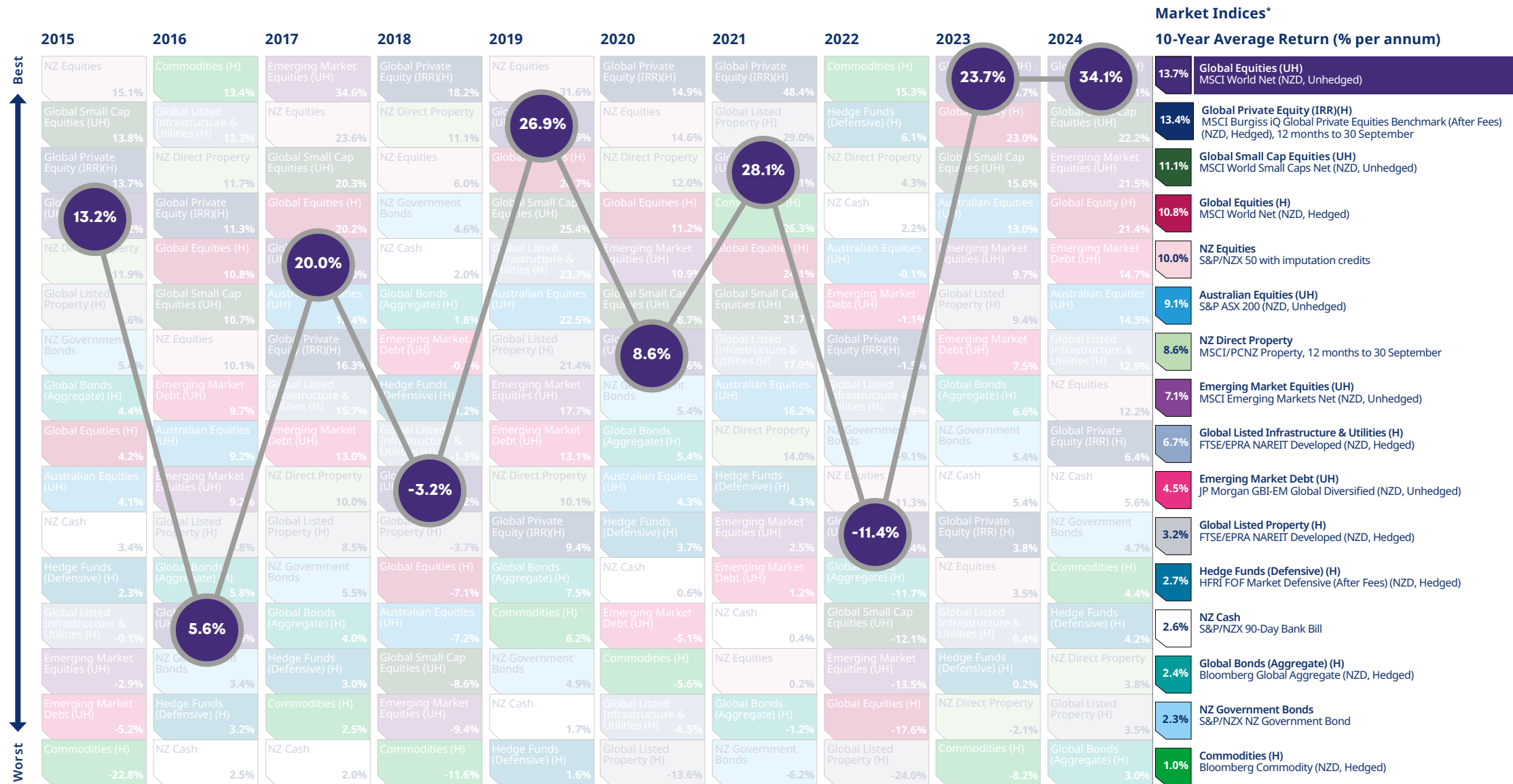
## Market Indices\*

	2015	2016	2017	2018	2019	2020	2021	2022	2023	2024	10-Year Average Return (% per annum)
Best	NZ Equities 15.1%	Commodities (H) 13.4%	Emerging Market Equities (UH) 34.6%	Global Private Equity (IRR)(H) 18.2%	NZ Equities 31.6%	Global Private Equity (IRR)(H) 14.9%	Global Private Equity (IRR)(H) 48.4%	Commodities (H) 15.3%	Global Equity (UH) 23.7%	Global Equity (UH) 34.1%	Global Equities (UH) MSCI World Net (NZD, Unhedged) 13.7%
	Global Small Cap Equities (UH) 13.8%	Global Listed Infrastructure & Utilities (H) 13.3%	NZ Equities 23.6%	NZ Direct Property 11.1%	Global Equities (UH) 26.9%	NZ Equities 14.6%	Global Listed Property (H) 29.0%	Hedge Funds (Defensive) (H) 6.1%	Global Equity (H) 23.0%	Global Small Cap Equities (UH) 22.2%	Global Private Equity (IRR)(H) MSCI Burgiss iQ Global Private Equities Benchmark (After Fees) (NZD, Hedged), 12 months to 30 September 13.4%
	Global Private Equity (IRR)(H) 13.7%	NZ Direct Property 11.7%	Global Small Cap Equities (UH) 20.3%	NZ Equities 6.0%	Global Equities (H) 26.7%	NZ Direct Property 12.0%	Global Equities (UH) 28.1%	NZ Direct Property 4.3%	Global Small Cap Equities (UH) 15.6%	Emerging Market Equities (UH) 21.5%	Global Small Cap Equities (UH) MSCI World Small Caps Net (NZD, Unhedged) 11.1%
	Global Equities (UH) 13.2%	Global Private Equity (IRR)(H) 11.3%	Global Equities (H) 20.2%	NZ Government Bonds 4.6%	Global Small Cap Equities (UH) 25.4%	Global Equities (H) 11.2%	Commodities (H) 26.3%	NZ Cash 2.2%	Australian Equities (UH) 13.0%	Global Equity (H) 21.4%	Global Equities (H) MSCI World Net (NZD, Hedged) 10.8%
	NZ Direct Property 11.9%	Global Equities (H) 10.8%	Global Equities (UH) 20.0%	NZ Cash 2.0%	Global Listed Infrastructure & Utilities (H) 23.7%	Emerging Market Equities (UH) 10.9%	Global Equities (H) 24.1%	Australian Equities (UH) -0.1%	Emerging Market Equities (UH) 9.7%	Emerging Market Debt (UH) 14.7%	NZ Equities S&P/NZX 50 with imputation credits 10.0%
	Global Listed Property (H) 5.6%	Global Small Cap Equities (UH) 10.7%	Australian Equities (UH) 18.4%	Global Bonds (Aggregate) (H) 1.8%	Australian Equities (UH) 22.5%	Global Small Cap Equities (UH) 8.7%	Global Small Cap Equities (UH) 21.7%	Emerging Market Debt (UH) -1.1%	Global Listed Property (H) 9.4%	Australian Equities (UH) 14.3%	Australian Equities (UH) S&P ASX 200 (NZD, Unhedged) 9.1%
	NZ Government Bonds 5.4%	NZ Equities 10.1%	Global Private Equity (IRR)(H) 16.3%	Emerging Market Debt (UH) -0.3%	Global Listed Property (H) 21.4%	Global Equities (UH) 8.6%	Global Listed Infrastructure & Utilities (H) 17.0%	Global Private Equity (IRR)(H) -1.5%	Emerging Market Debt (UH) 7.5%	Global Listed Infrastructure & Utilities (H) 12.9%	NZ Direct Property MSCI/PCNZ Property, 12 months to 30 September 8.6%
	Global Bonds (Aggregate) (H) 4.4%	Emerging Market Debt (UH) 9.7%	Global Listed Infrastructure & Utilities (H) 15.7%	Hedge Funds (Defensive) (H) -1.2%	Emerging Market Equities (UH) 17.7%	NZ Government Bonds 5.4%	Australian Equities (UH) 16.2%	Global Listed Infrastructure & Utilities (H) -3.9%	Global Bonds (Aggregate) (H) 6.6%	NZ Equities 12.2%	Emerging Market Equities (UH) MSCI Emerging Markets Net (NZD, Unhedged) 7.1%
	Global Equities (H) 4.2%	Australian Equities (UH) 9.2%	Emerging Market Debt (UH) 13.0%	Global Listed Infrastructure & Utilities (H) -1.3%	Emerging Market Debt (UH) 13.1%	Global Bonds (Aggregate) (H) 5.4%	NZ Direct Property 14.0%	NZ Government Bonds -9.1%	NZ Government Bonds 5.4%	Global Private Equity (IRR) (H) 6.4%	Global Listed Infrastructure & Utilities (H) FTSE/EPRA NAREIT Developed (NZD, Hedged) 6.7%
	Australian Equities (UH) 4.1%	Emerging Market Equities (UH) 9.2%	NZ Direct Property 10.0%	Global Equities (UH) -3.2%	NZ Direct Property 10.1%	Australian Equities (UH) 4.3%	Hedge Funds (Defensive) (H) 4.3%	NZ Equities -11.3%	NZ Cash 5.4%	NZ Cash 5.6%	Emerging Market Debt (UH) JP Morgan GBI-EM Global Diversified (NZD, Unhedged) 4.5%
	NZ Cash 3.4%	Global Listed Property (H) 6.8%	Global Listed Property (H) 8.5%	Global Listed Property (H) -3.7%	Global Private Equity (IRR)(H) 9.4%	Hedge Funds (Defensive) (H) 3.7%	Emerging Market Equities (UH) 2.5%	Global Equities (UH) -11.4%	Global Private Equity (IRR) (H) 3.8%	NZ Government Bonds 4.7%	Global Listed Property (H) FTSE/EPRA NAREIT Developed (NZD, Hedged) 3.2%
	Hedge Funds (Defensive) (H) 2.3%	Global Bonds (Aggregate) (H) 5.8%	NZ Government Bonds 5.5%	Global Equities (H) -7.1%	Global Bonds (Aggregate) (H) 7.5%	NZ Cash 0.6%	Emerging Market Debt (UH) 1.2%	Global Bonds (Aggregate) (H) -11.7%	NZ Equities 3.5%	Commodities (H) 4.4%	Hedge Funds (Defensive) (H) HFRI FOF Market Defensive (After Fees) (NZD, Hedged) 2.7%
	Global Listed Infrastructure & Utilities (H) -0.1%	Global Equities (UH) 5.6%	Global Bonds (Aggregate) (H) 4.0%	Australian Equities (UH) -7.2%	Commodities (H) 6.2%	Emerging Market Debt (UH) -5.1%	NZ Cash 0.4%	Global Small Cap Equities (UH) -12.1%	Global Listed Infrastructure & Utilities (H) 0.4%	Hedge Funds (Defensive) (H) 4.2%	NZ Cash S&P/NZX 90-Day Bank Bill 2.6%
	Emerging Market Equities (UH) -2.9%	NZ Government Bonds 3.4%	Hedge Funds (Defensive) (H) 3.0%	Global Small Cap Equities (UH) -8.6%	NZ Government Bonds 4.9%	Commodities (H) -5.6%	NZ Equities 0.2%	Emerging Market Equities (UH) -13.5%	Hedge Funds (Defensive) (H) 0.2%	NZ Direct Property 3.8%	Global Bonds (Aggregate) (H) Bloomberg Global Aggregate (NZD, Hedged) 2.4%
	Emerging Market Debt (UH) -5.2%	Hedge Funds (Defensive) (H) 3.2%	Commodities (H) 2.5%	Emerging Market Equities (UH) -9.4%	NZ Cash 1.7%	Global Listed Infrastructure & Utilities (H) -6.5%	Global Bonds (Aggregate) (H) -1.2%	Global Equities (H) -17.6%	NZ Direct Property -2.1%	Global Listed Property (H) 3.5%	NZ Government Bonds S&P/NZX NZ Government Bond 2.3%
Worst	Commodities (H) -22.8%	NZ Cash 2.5%	NZ Cash 2.0%	Commodities (H) -11.6%	Hedge Funds (Defensive) (H) 1.6%	Global Listed Property (H) -13.6%	NZ Government Bonds -6.2%	Global Listed Property (H) -24.0%	Commodities (H) -8.2%	Global Bonds (Aggregate) (H) 3.0%	Commodities (H) Bloomberg Commodity (NZD, Hedged) 1.0%

\* All indices are gross of fees with the exception of Hedge Funds (Defensive) and Global Private Equity, which are net of fees.

» Click here for important notices.

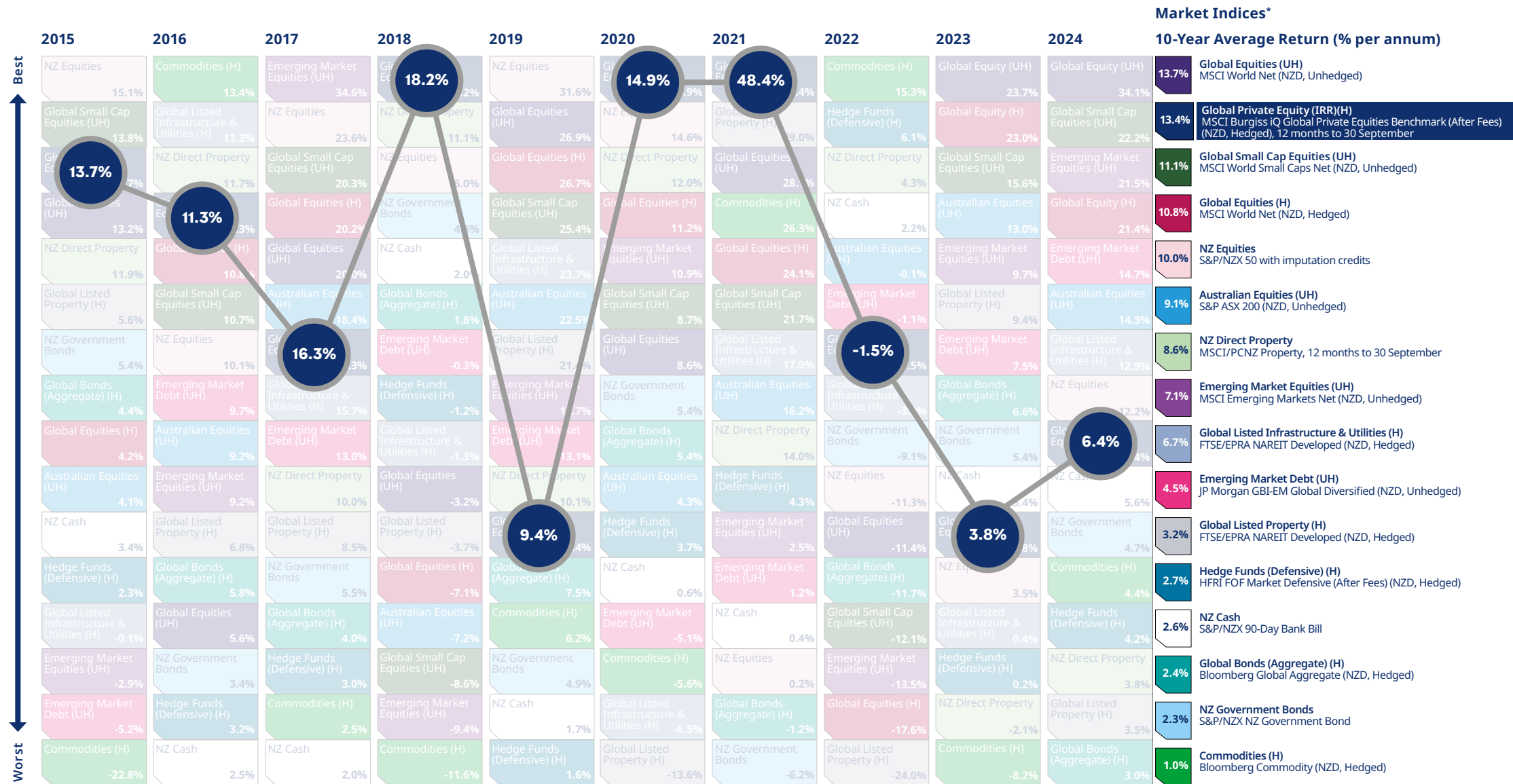
# Mercer periodic table of annual investment returns



\* All indices are gross of fees with the exception of Hedge Funds (Defensive) and Global Private Equity, which are net of fees.

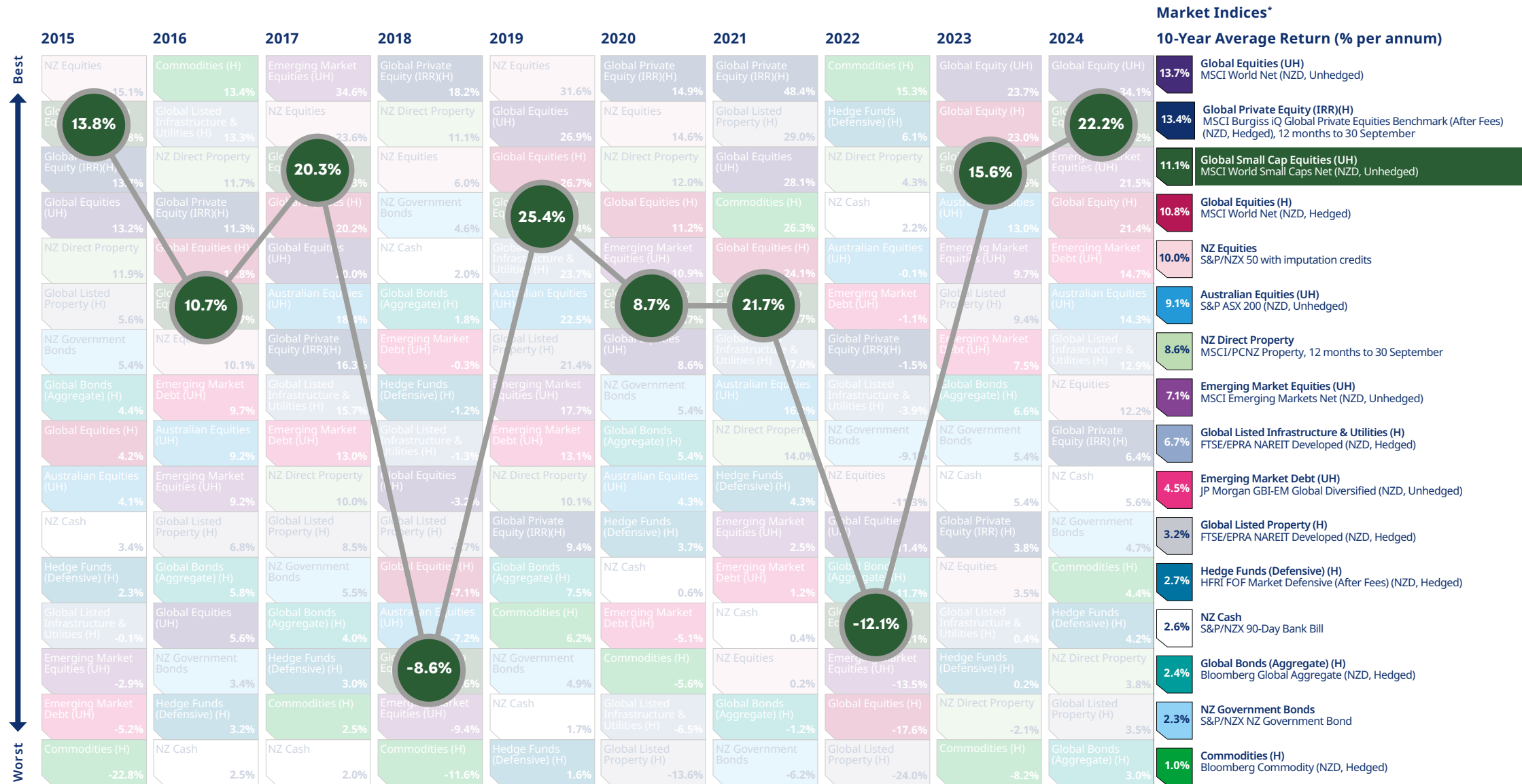
» Click here for important notices.

# Mercer periodic table of annual investment returns



\* All indices are gross of fees with the exception of Hedge Funds (Defensive) and Global Private Equity, which are net of fees.

# Mercer periodic table of annual investment returns

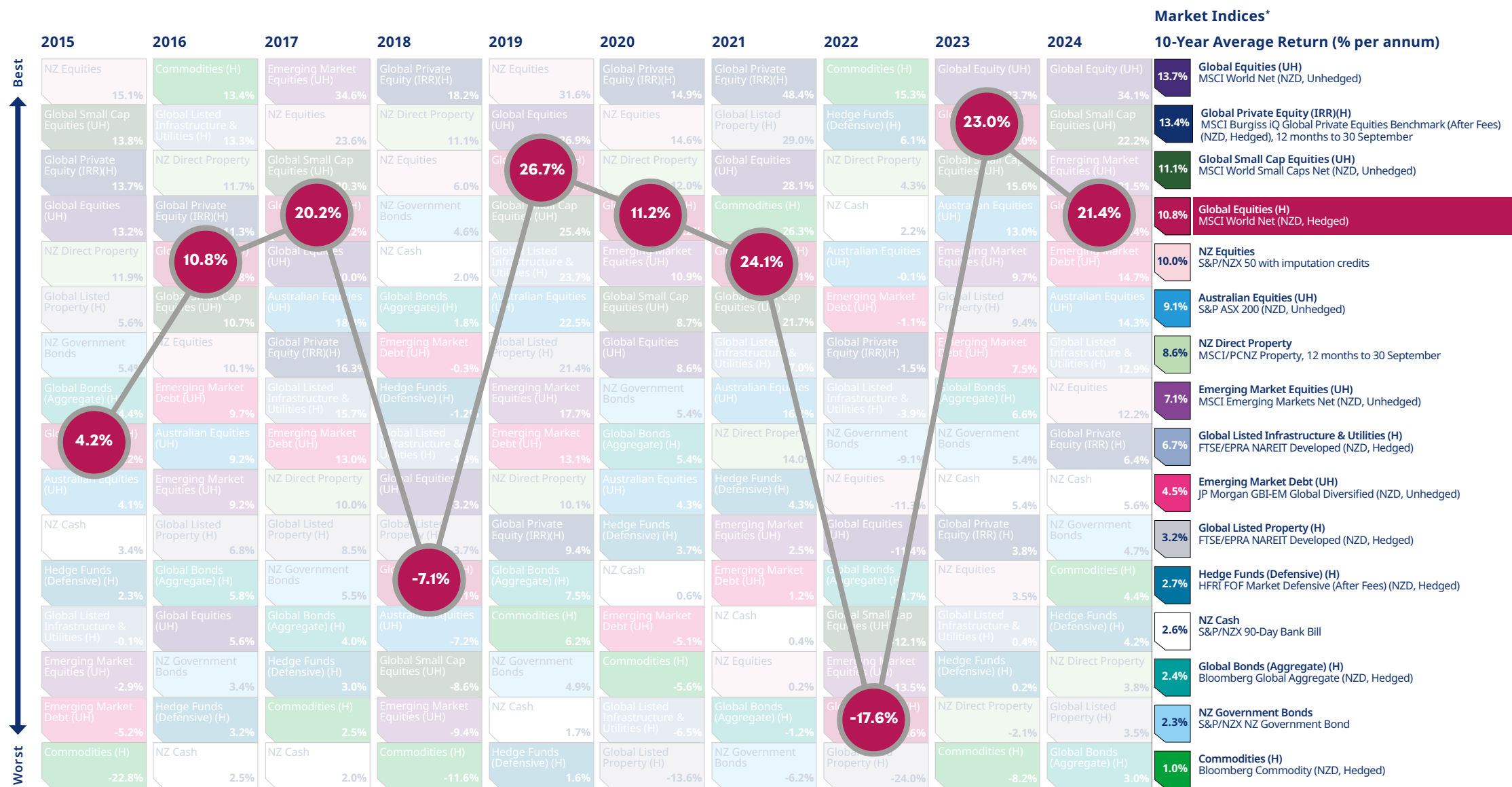


» Click here for important notices.

\* All indices are gross of fees with the exception of Hedge Funds (Defensive) and Global Private Equity, which are net of fees.



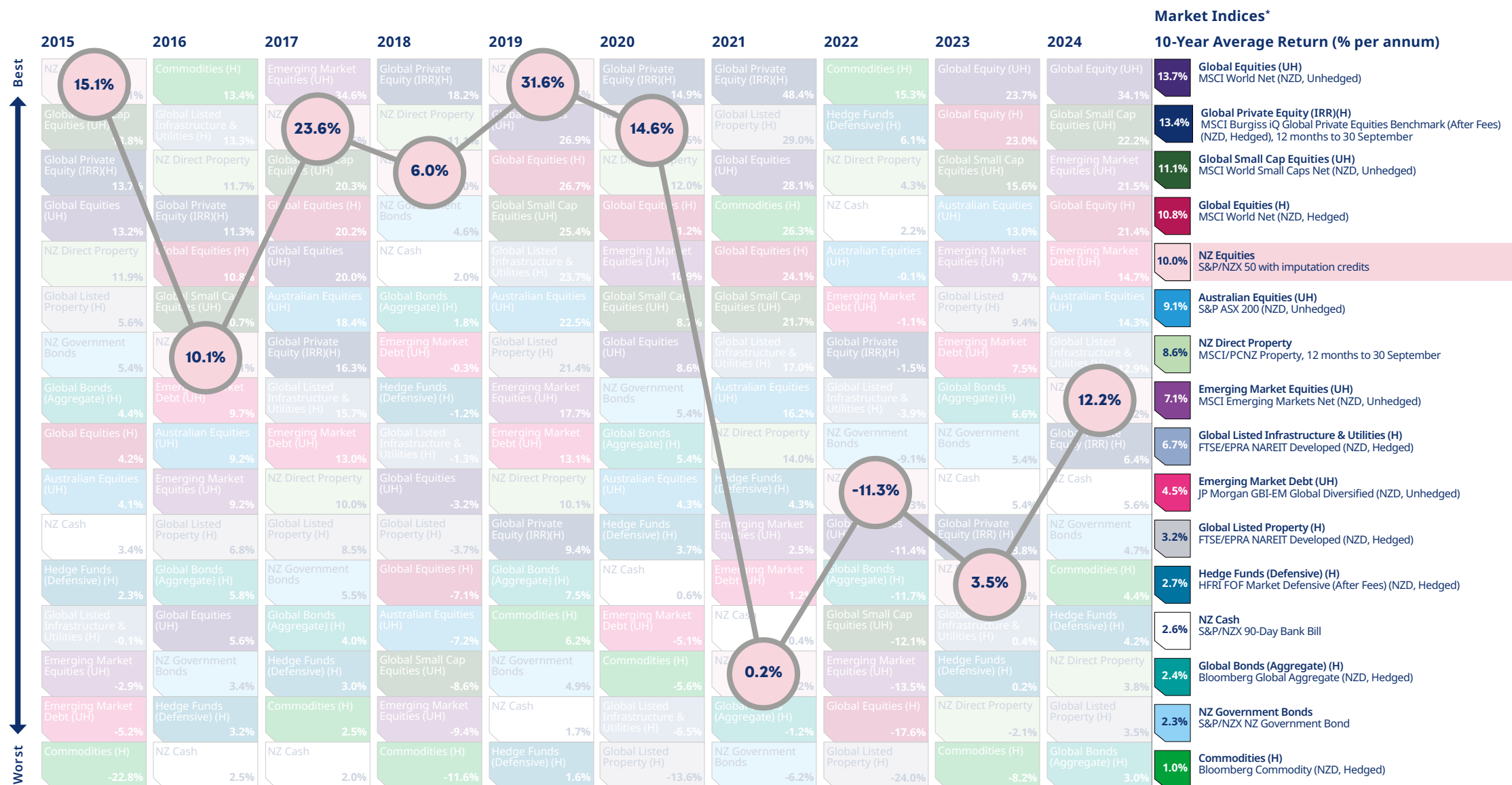
# Mercer periodic table of annual investment returns



\* All indices are gross of fees with the exception of Hedge Funds (Defensive) and Global Private Equity, which are net of fees.

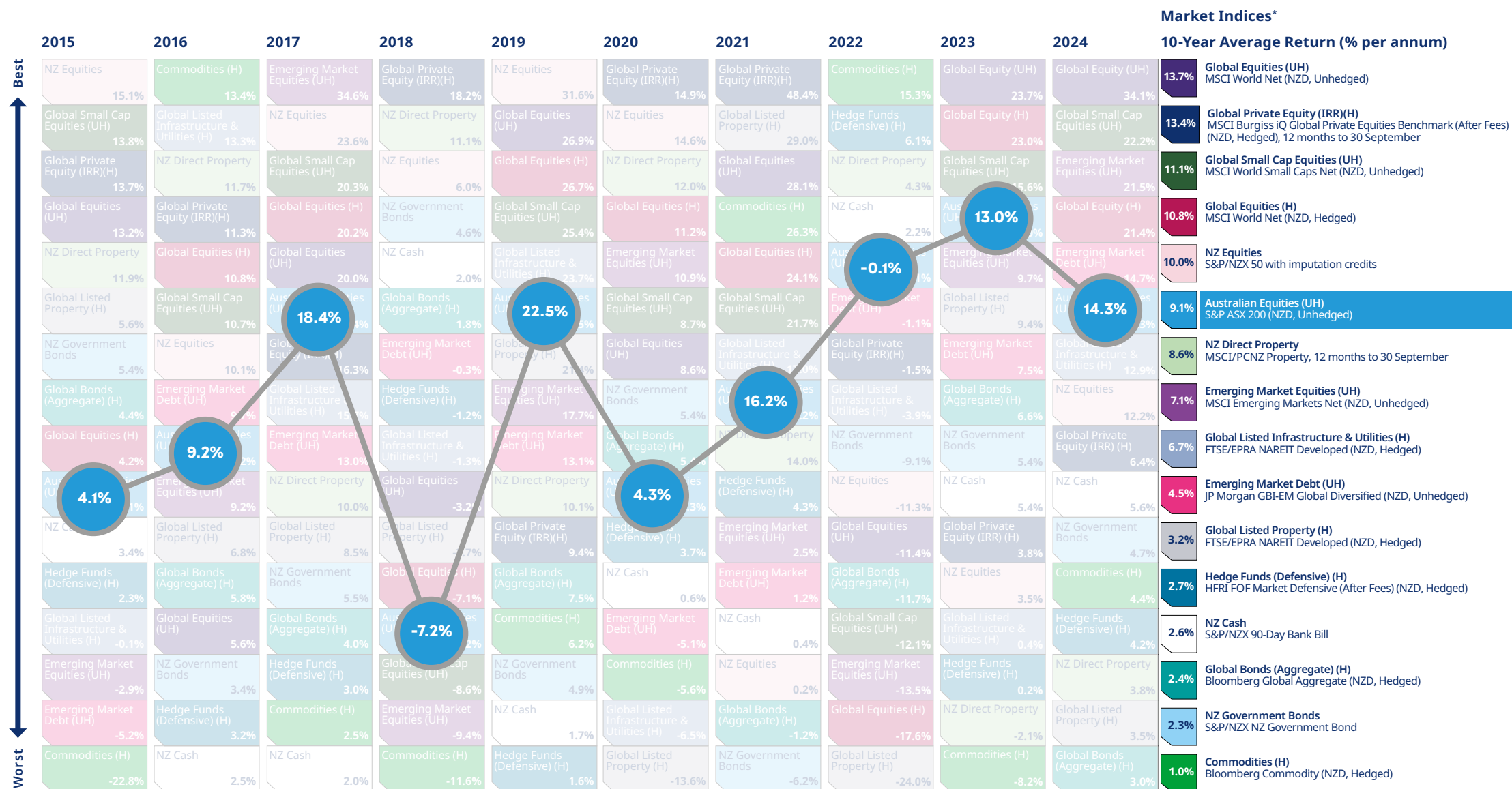
» [Click here for important notices.](#)

# Mercer periodic table of annual investment returns



\* All indices are gross of fees with the exception of Hedge Funds (Defensive) and Global Private Equity, which are net of fees.

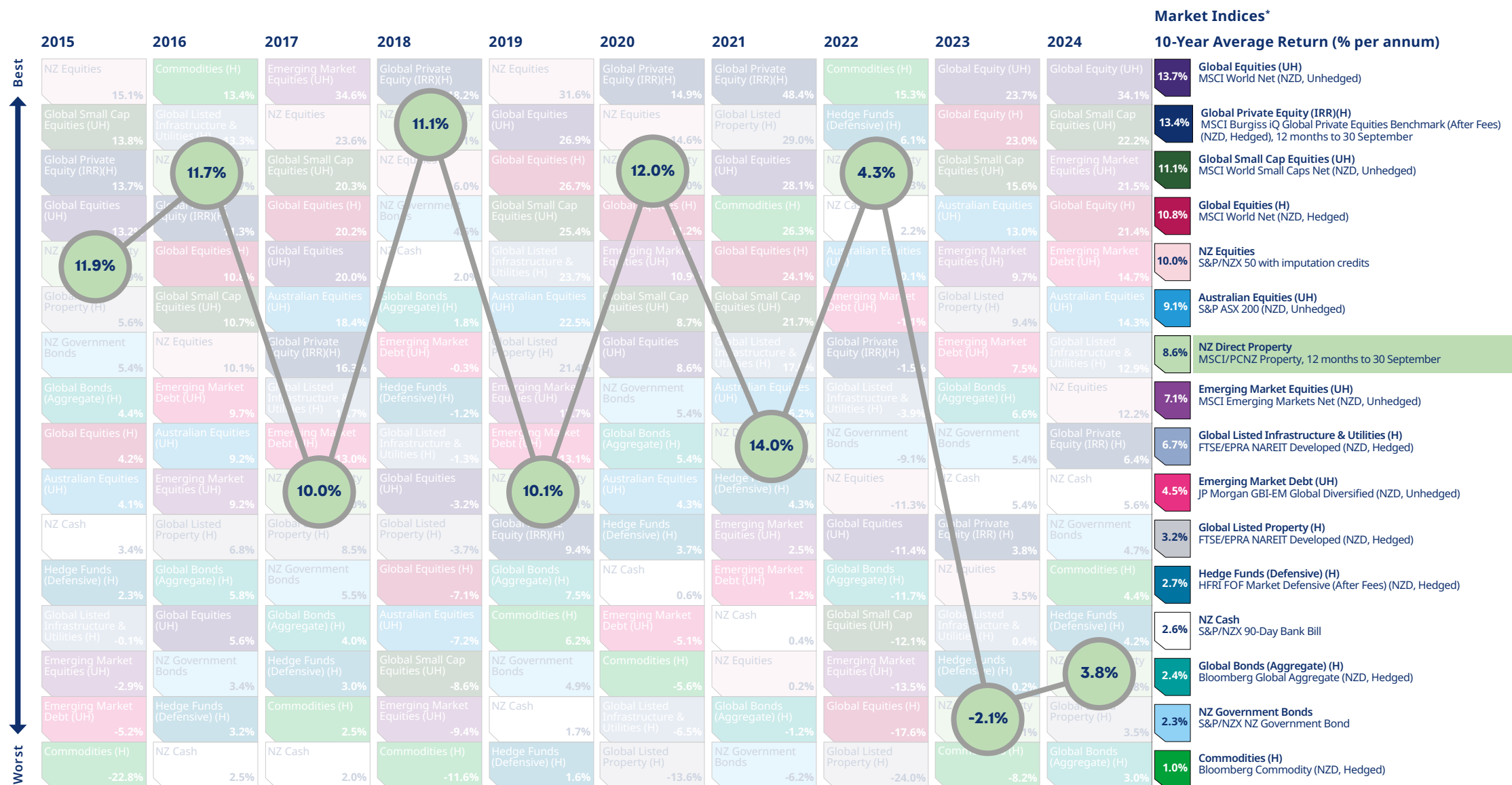
# Mercer periodic table of annual investment returns



» Click here for important notices.

\* All indices are gross of fees with the exception of Hedge Funds (Defensive) and Global Private Equity, which are net of fees.

# Mercer periodic table of annual investment returns

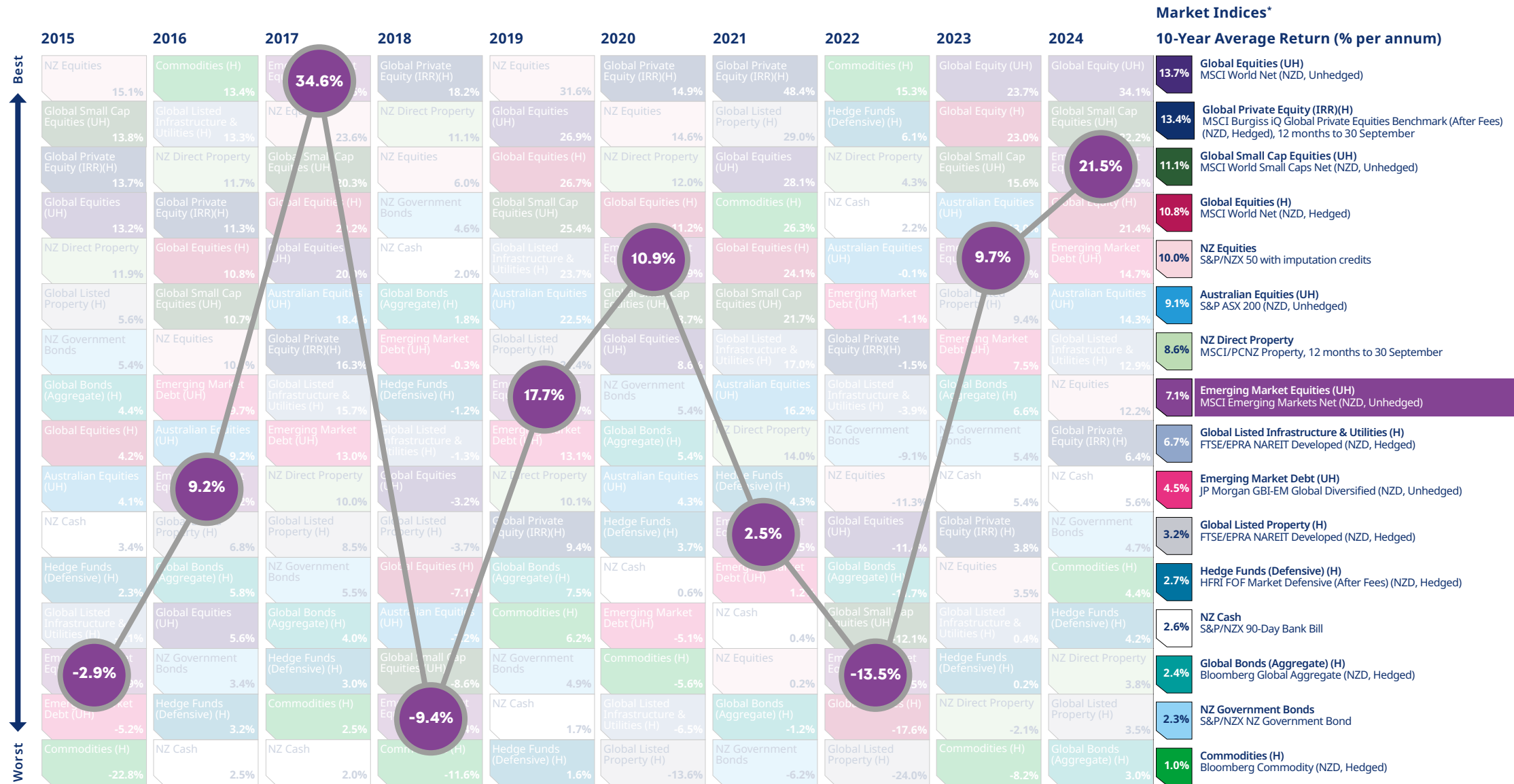


» Click here for important notices.

\* All indices are gross of fees with the exception of Hedge Funds (Defensive) and Global Private Equity, which are net of fees.



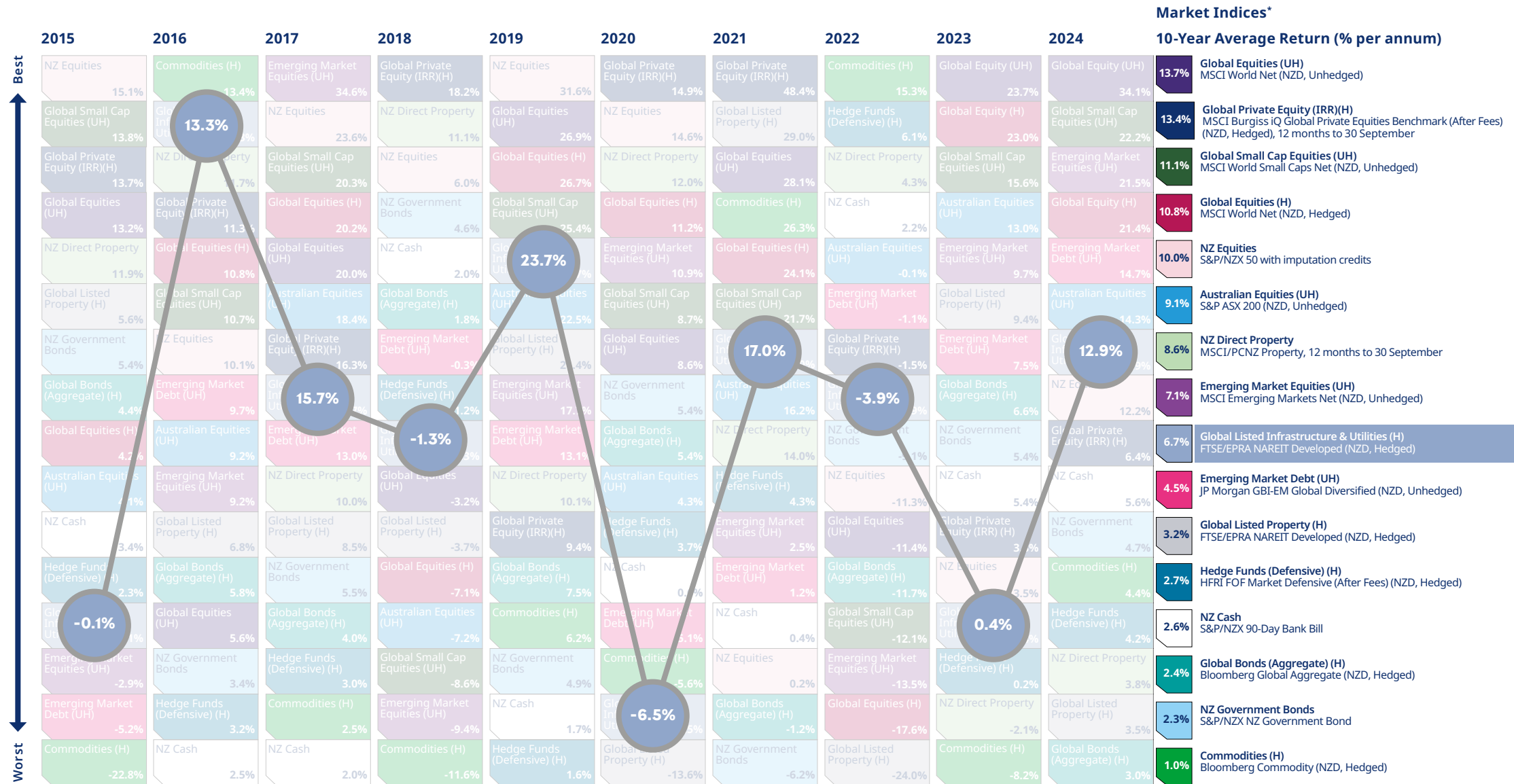
# Mercer periodic table of annual investment returns



» [Click here for important notices.](#)

\* All indices are gross of fees with the exception of Hedge Funds (Defensive) and Global Private Equity, which are net of fees.

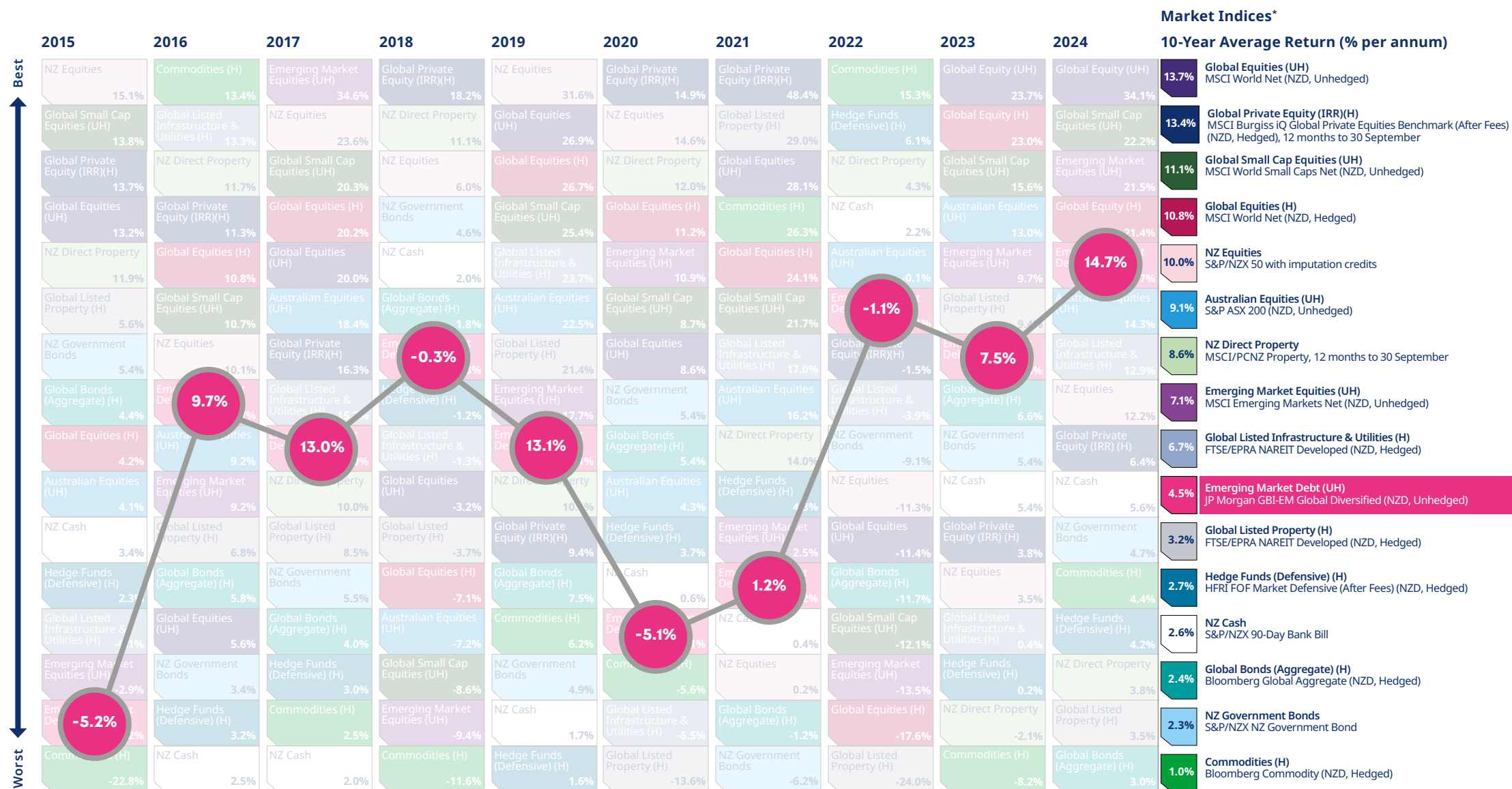
# Mercer periodic table of annual investment returns



» Click here for important notices.

\* All indices are gross of fees with the exception of Hedge Funds (Defensive) and Global Private Equity, which are net of fees.

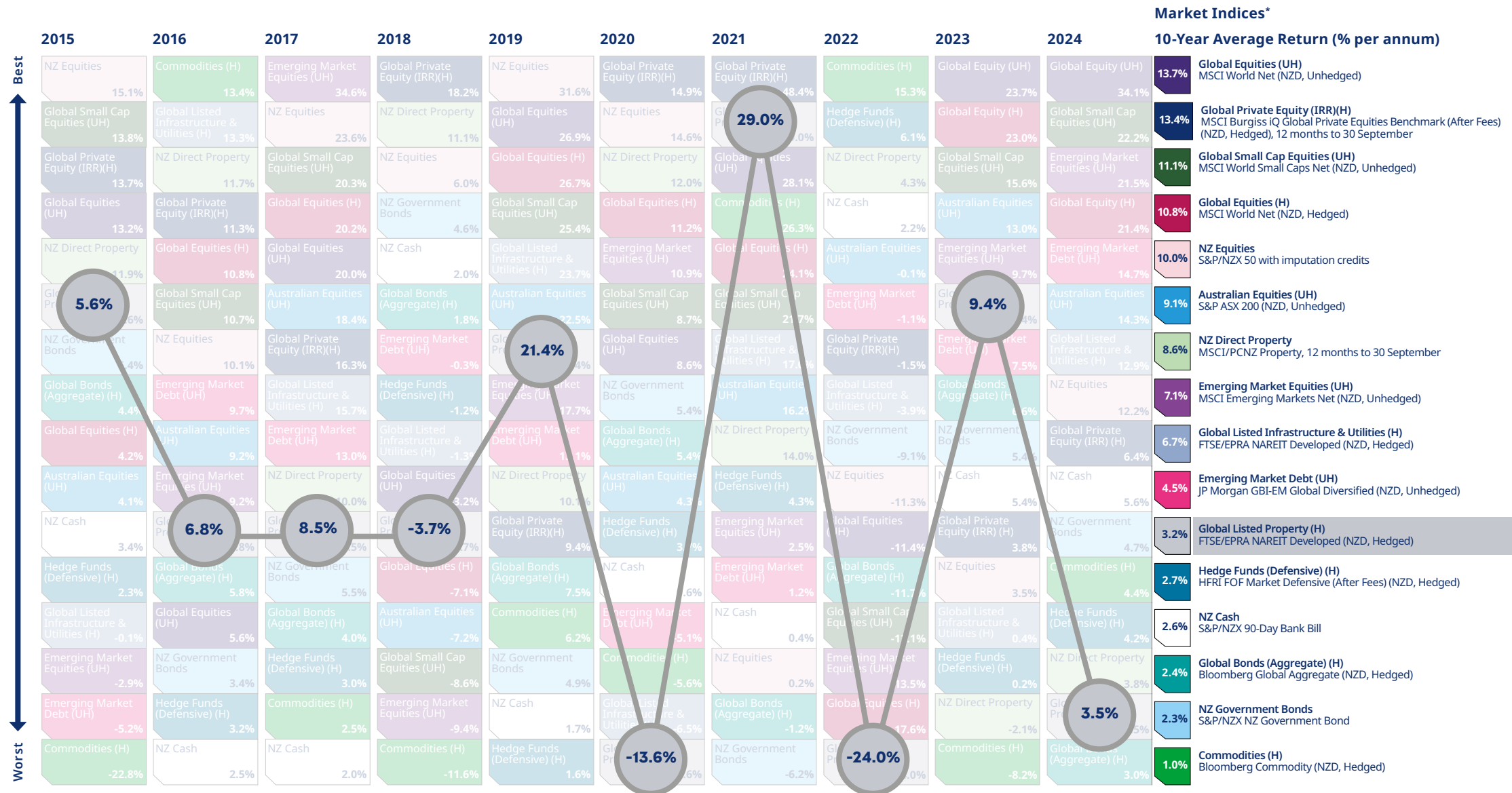
# Mercer periodic table of annual investment returns



» Click here for important notices.

\* All indices are gross of fees with the exception of Hedge Funds (Defensive) and Global Private Equity, which are net of fees.

# Mercer periodic table of annual investment returns

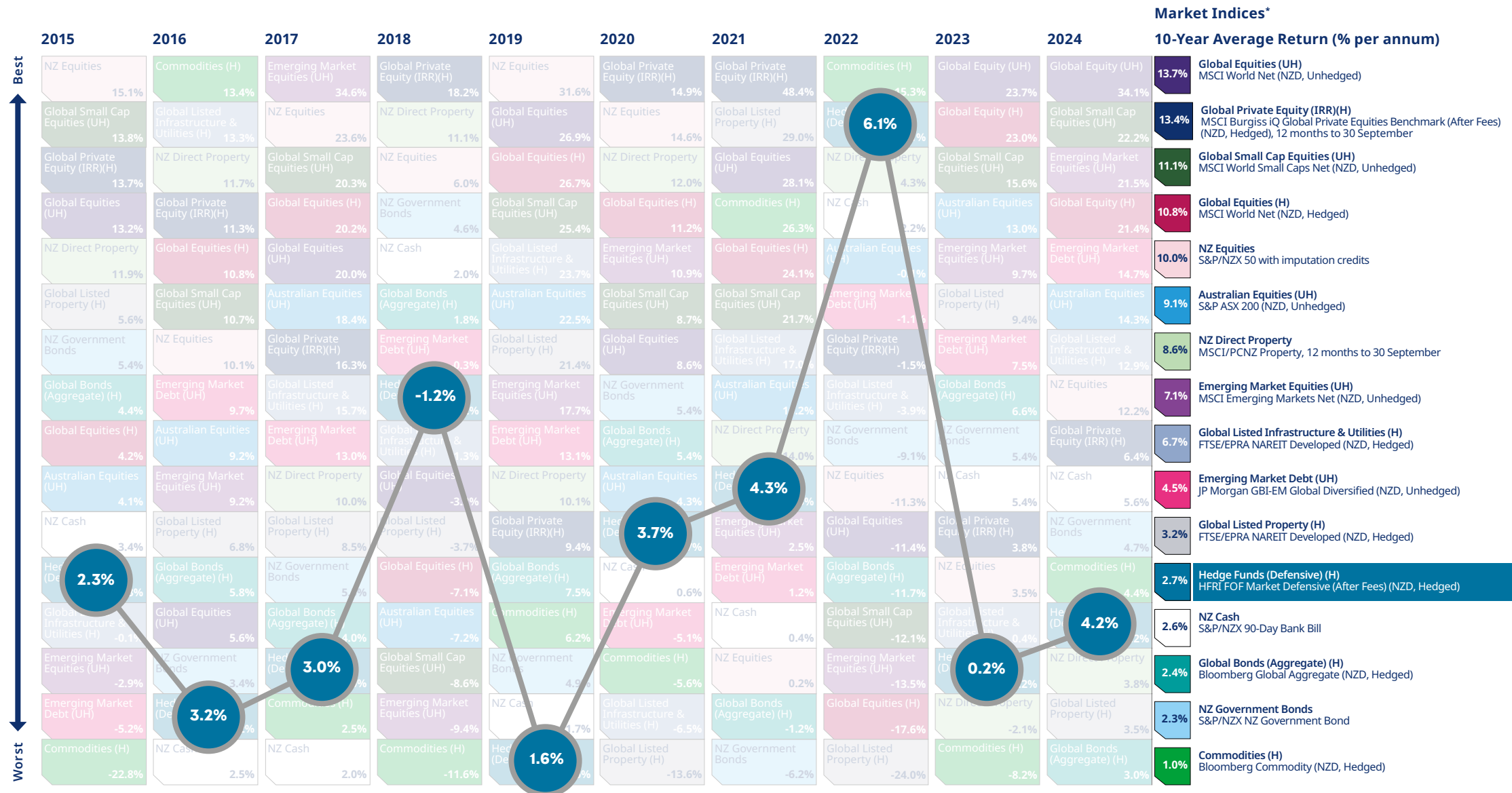


\* All indices are gross of fees with the exception of Hedge Funds (Defensive) and Global Private Equity, which are net of fees.

» [Click here for important notices.](#)



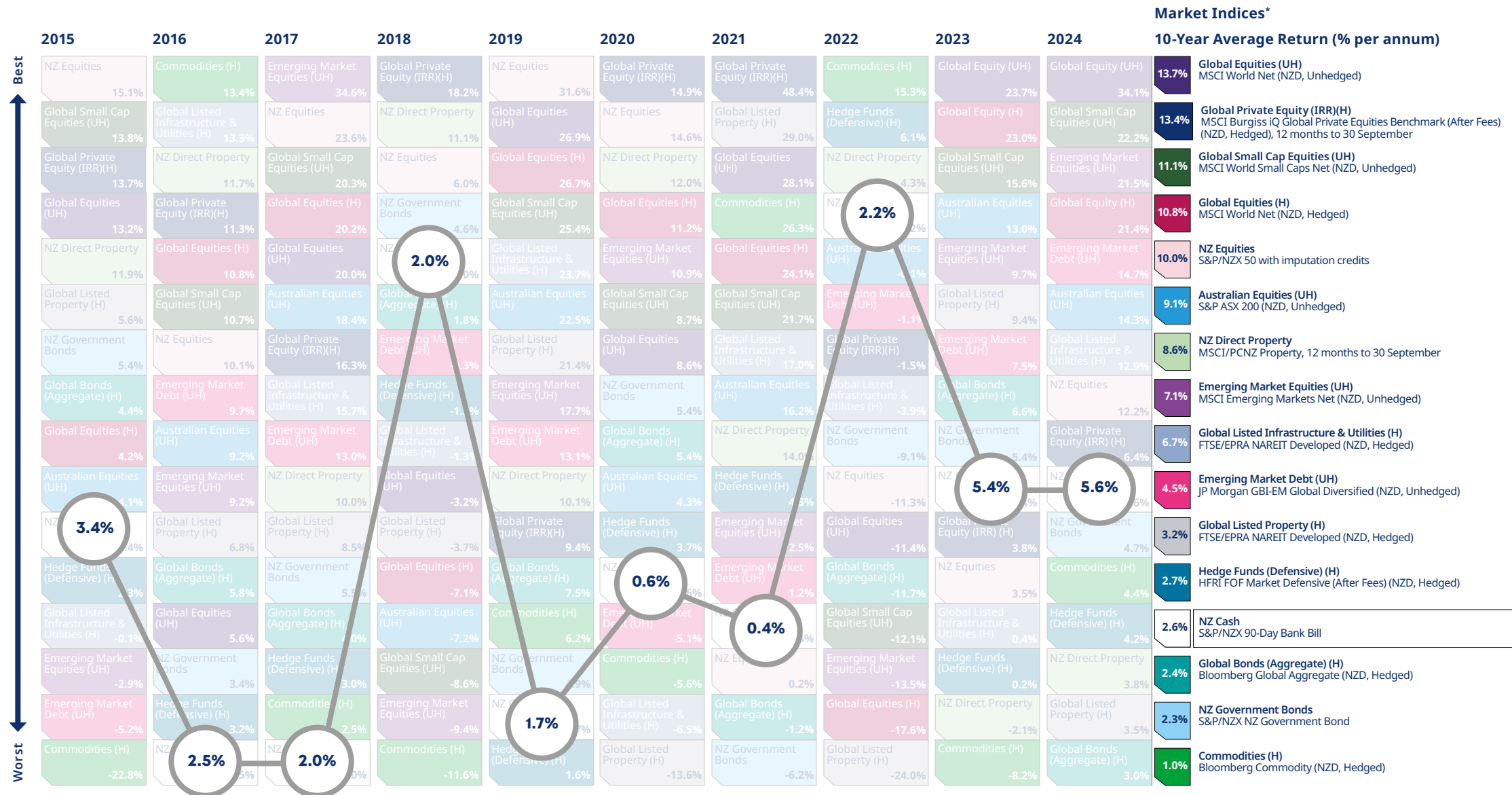
# Mercer periodic table of annual investment returns



\* All indices are gross of fees with the exception of Hedge Funds (Defensive) and Global Private Equity, which are net of fees.

» [Click here for important notices.](#)

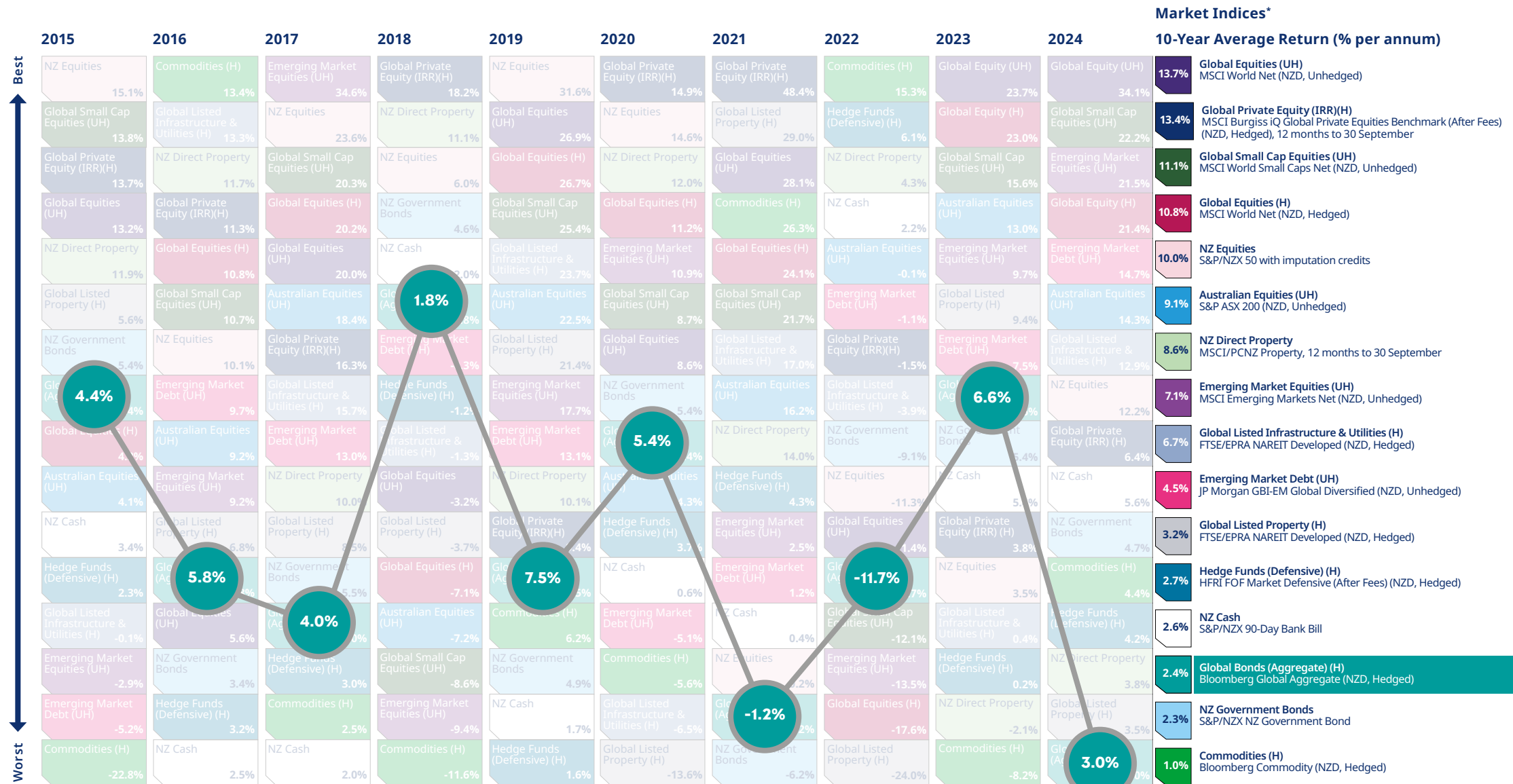
# Mercer periodic table of annual investment returns



\* All indices are gross of fees with the exception of Hedge Funds (Defensive) and Global Private Equity, which are net of fees.

» Click here for important notices.

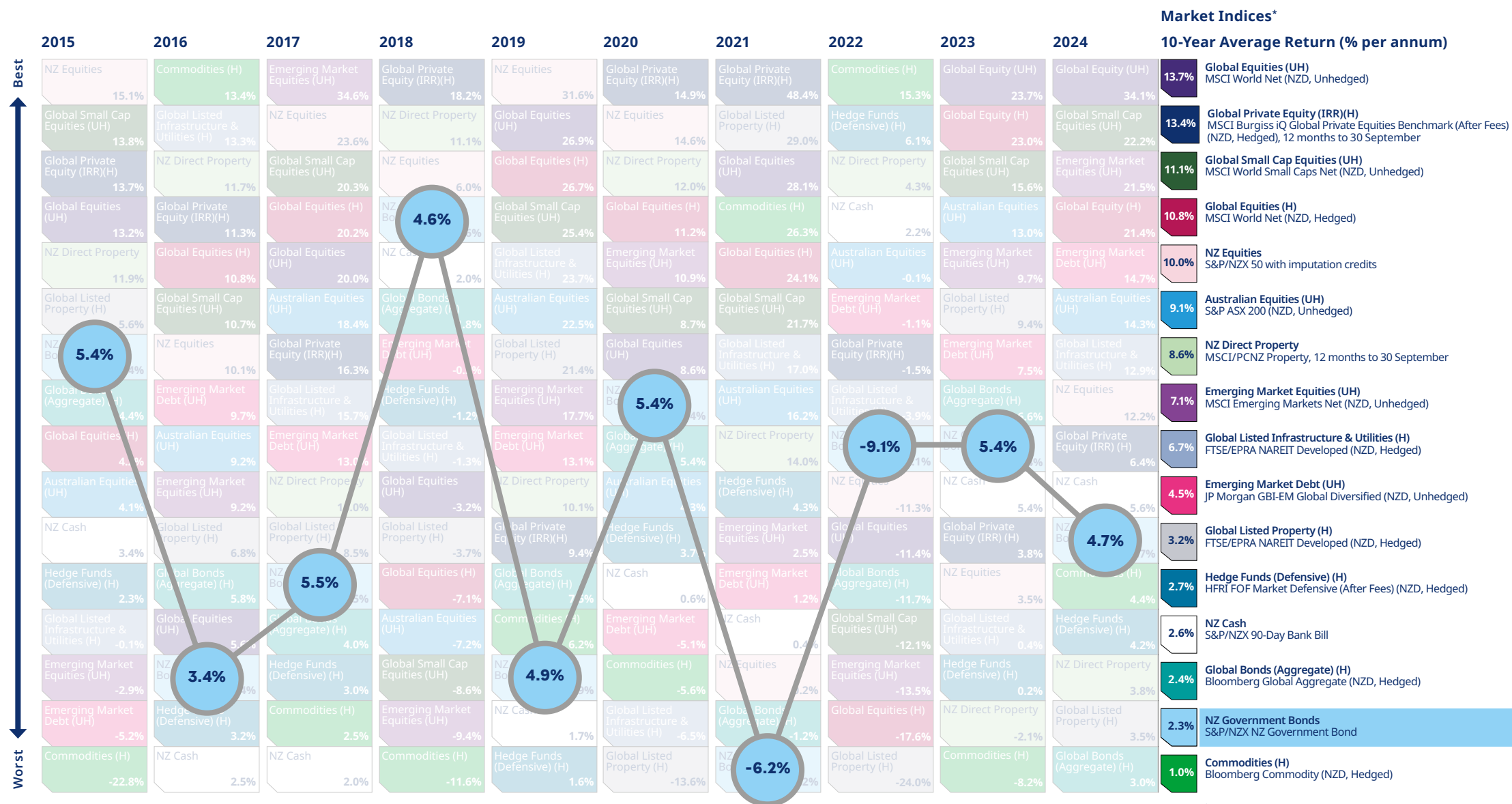
# Mercer periodic table of annual investment returns



» Click here for important notices.

\* All indices are gross of fees with the exception of Hedge Funds (Defensive) and Global Private Equity, which are net of fees.

# Mercer periodic table of annual investment returns

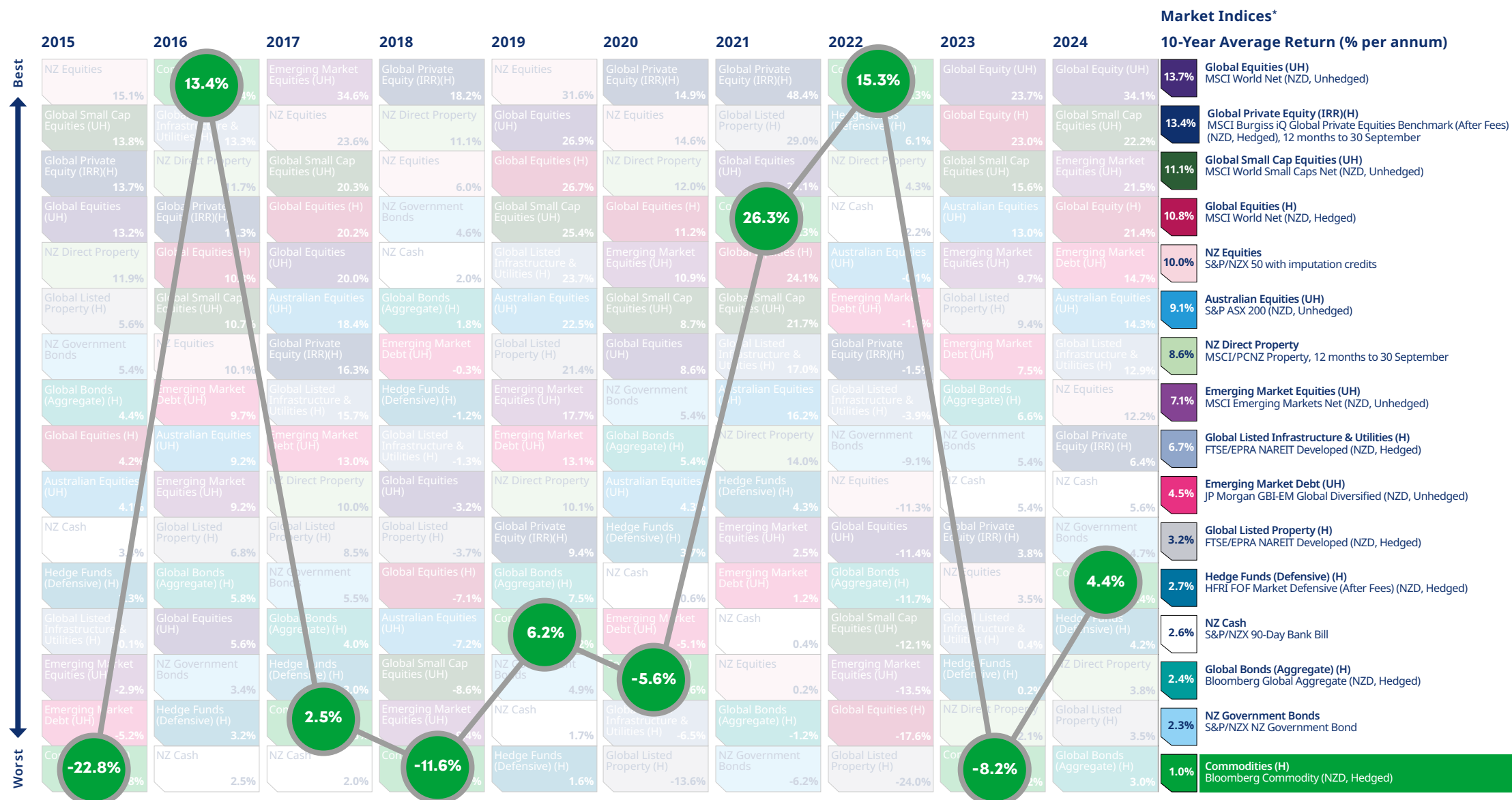


» Click here for important notices.

\* All indices are gross of fees with the exception of Hedge Funds (Defensive) and Global Private Equity, which are net of fees.



# Mercer periodic table of annual investment returns



» Click here for important notices.

\* All indices are gross of fees with the exception of Hedge Funds (Defensive) and Global Private Equity, which are net of fees.

# Mercer has been helping New Zealanders manage their investments and retirement savings for over 65 years.

## About Mercer

[Mercer](#), a business of [Marsh McLennan](#) (NYSE: MMC), is a global leader in helping clients realize their investment objectives, shape the future of work and enhance health and retirement outcomes for their people. Marsh McLennan is a global leader in risk, strategy and people, advising clients in 130 countries across four businesses: [Marsh](#), [Guy Carpenter](#), [Mercer](#) and [Oliver Wyman](#). With annual revenue of over \$24 billion and more than 90,000 colleagues, Marsh McLennan helps build the confidence to thrive through the power of perspective.

For more information, visit [mercerc.com](https://www.mercer.com). Follow Mercer New Zealand on [LinkedIn](#).



[Click here to return to all indices.](#)

## Disclaimer

© 2025, Mercer. All rights reserved.

This contains confidential and proprietary information of Mercer and is intended for the exclusive use of the parties to whom it was provided by Mercer. Its contents may not be modified, sold or otherwise provided, in whole or in part, to any person or entity, without Mercer's prior written permission.

Information contained herein has been obtained from a range of third party sources. While the information is believed to be reliable, Mercer has not sought to verify it independently. As such, Mercer makes no representations or warranties as to the accuracy of the information presented and takes no responsibility or liability (including for indirect, consequential or incidental damages), for any error, omission or inaccuracy in the data supplied by any third party.

The findings, ratings and/or opinions expressed herein are the intellectual property of Mercer and are subject to change without notice. They are not intended to convey any guarantees as to the future performance of the investment products, asset classes or capital markets discussed. Past performance does not guarantee future results. Mercer's ratings do not constitute individualised advice.

LCPA 25/NZ062